



COMUNE DI NUCETTO

PROVINCIA DI CUNEO

- Servizio Amm.vo
- Servizio Tecnico
- Servizio Finanziario

N.ro prog. Servizio ___67___/2017

N.ro prog. Reg.Gen. ___102___/2017

Nucetto, li 5 settembre 2017

oggetto: Fornitura personal computer

IL RESPONSABILE DEL SERVIZIO

VISTO il Decreto Legislativo n. 267 del 18 agosto 2000;

VISTO il Regolamento di Contabilità approvato con deliberazione consiliare n. 12 del 6.4.2016;

VISTA la delibera della G.C.n n. 22 del 20.4.2017;

PRESO ATTO dell'art. 3 della Legge n. 136 del 13.8.2010 e successive modifiche, circa gli obblighi della tracciabilità dei flussi finanziari;

RILEVATO che è necessario provvedere alla sostituzione del pc dell'ufficio tecnico ormai obsoleto e non più in grado di soddisfare le esigenze per il regolare funzionamento dell'ufficio;

DATO ATTO che per la fornitura di cui trattasi la ditta Informatica System di Vicoforte ha inviato un preventivo di spesa pari ad € 520,00 escluso IVA per n. 1 pc Fujitsu esprimo P556/2 con le caratteristiche meglio dettagliate nell'allegato, oltre a euro 150,00 a corpo per l'installazione;

ATTESO che la medesima offerta prevedeva la fornitura opzionale di un software Office 2016 e un adattatore da display porta vgs al costo rispettivamente di 175,00 euro e 13,00 entrambi oltre IVA,

VISTO l'art. 1 comma 502 e 503 della legge n. 208/2015 (legge di stabilità) con cui per gli acquisti di beni e servizi sotto i mille euro è stato tolto l'obbligo di ricorrere agli strumenti telematici di acquisizione, potendo così provvedere ad acquisti diretti;

DATO ATTO che per l'intervento in oggetto non viene superata la soglia dei mille euro, quindi si ritiene opportuno provvedere a affidare dalla ditta Informatica System sulla base del preventivo comunicato e stante l'urgenza di provvedere a garantire il regolare funzionamento dell'ufficio anagrafe - CIG: Z8F1FCBA03;

DETERMINA

- 1) Di affidare, attese le premesse, alla ditta Informatica System la fornitura ed installazione di n. 1 pc Fujitsu Esprimo il P556/2 nonché del software Office 2016 e di un adattatore da display porta VGA, come dal preventivo allegato alla presente per farne parte integrante e sostanziale, per un totale di €. 858,00 oltre IVA – CIG: Z8F1FCBA03

2. di imputare l'importo di € 1.046,76 in base al cronoprogramma di spesa, sulla base delle norme e dei principi contabili di cui al D.Lgs. 118/2011, del D.P.C.M. 28/12/2011 e del D.Lgs. 126/2014 come segue:

Anno di registrazione		Anno di imputazione	
Anno	Importo totale	Anno	Importo annuo
2015	1.046,76	2017	1.046,76

3. di imputare la somma complessiva di euro 1.046,76 del bilancio di previsione 2017/2019, rispettivamente come segue:

Bilancio	Missione	Titolo	Programma	Macro aggregato	Codice P.C.F.	Cap.	Importo
2015	12	1	3	103	1.03.01.02.000	1860	1.046,76

IL RESPONSABILE DEL SERVIZIO
Vassallo Danilo



Vicoforte
Via Mondovì Piazza 8
12080 Vicoforte (CN)
Tel. 0174 5800
Fax 0174 580158

Cuneo - Torino - Aosta

e-mail: staff@infosys.it
http://www.infosys.it



Preferred Partner



Value Added Services
Authorized Developer



Registro società
Tribunale di Mondovì n. 1834
CCIA n. 128409
capitale sociale € 83.920,00
Partiva IVA 01053440944

OGGETTO: SVILUPPO COMMERCIALIZZAZIONE
SOLUZIONI TECNOLOGICAMENTE AVANZATI
ASSISTENZA HARDWARE SOFTWARE

Vicoforte 04-09-2017



Spett.le
COMUNE DI NUCETTO
Via Nazionale, 75
12070 NUCETTO (CN)

c.a. *Rag. Nicolino*

Protocollo: GG/MR/7446/2017

OFFERTA PERSONAL COMPUTER PER UFFICIO TECNICO

Come da Vs. cortese richiesta, Vi alleghiamo la ns. migliore offerta per la fornitura in oggetto.

Rimaniamo a disposizione per ogni ulteriore informazione e, in attesa di un Vs. gentile riscontro, porgiamo distinti saluti.

Sergio Blengini
Direttore Commerciale

All.: Proposta Economica
Documentazione illustrativa

PROPOSTA ECONOMICAUfficio tecnico**N.01 PERSONAL COMPUTER FUJITSU ESPRIMO P556/2**

Cpu Intel Quad Core i5-7400 3.0 GHz - RAM 8 GB DDR4 RAM (2400 MHZ) - HDD SSD 256 GB - masterizzatore dvd dual layer - scheda audio integrata nel chipset - slot: 1 pci express x16 + 2 pci express x1 - scheda di rete 10/100/1000 integrata nel chipset - Certificazioni: germany GS - europe CE - usa/canada FCC CLASS B, CCSAUS - global ROHS (restriction of hazardous substances), WEEE (waste electrical and electronic equipment), microsoft operating systems (hct / hcl entry / whql), energy star 6.1, epeat gold china ccc, rohs).

SCHEDA VIDEO INTEGRATA, INTERFACCIA DP E DVI (no VGA)

SISTEMA OPERATIVO WIN 10 PRO

GARANZIA 12 MESI ON SITE

Prezzo promo € **520,00**

Opzionale**SOFTWARE MICROSOFT OFFICE 2016 HOME AND BUSINESS
MEDIALESS BOX**

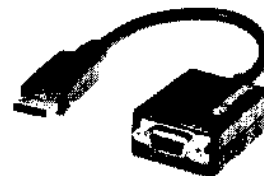
(Word, Excel, Power Point, One note, Outlook)

€ **175,00**

ADATTATORE DA DISPLAY PORT A VGA

Per collegamento monitor VGA a PC sopra proposto

€ **13,00**

**ATTIVITA' E SERVIZI**

Installazione hardware e software di base

Recupero archivi e risorse software effettuato eventualmente con la collaborazione delle società fornitrici del software applicativo. Eventuali interventi che le società fornitrici di Software non ritenessero possibili tramite telefono, dovranno essere concordate nella sostanza e nella parte economica con le società stesse

Collaudo

A corpo € **150,00**

CONDIZIONI FORNITURA

Consegna	30 gg. data ordine
Pagamento	30 giorni D.F.
I.V.A.	22 % Vs. carico
Trasporto	ns. carico
Garanzia	12 mesi
Validità offerta	30 gg. <i>(con riserva di verifica della disponibilità all'atto dell'ordine)</i>

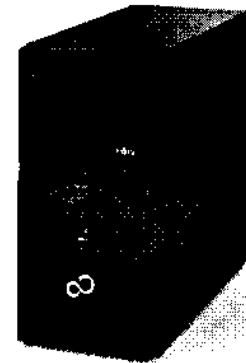
Fujitsu recommends Windows 10 Pro.

Data Sheet

FUJITSU Desktop ESPRIMO P556/E85+

Your Flexible and Economic PC

The FUJITSU ESPRIMO P556/E85+ Desktop provides high-quality computing for your daily office tasks. It supports attractive price points and delivers the continuity needed for daily operations. Your valuable business data is protected by the latest TPM controller and the Erasedisk option. To meet your specific hardware needs it can be either individually configured or customized.



High performance and best price/performance ratio

Powerful and cost-effective microtower

- 6th generation Intel® Core™ processor family

System management

The perfect answer to offload your IT administrators

- DeskView Admin enhances the management of the devices in your IT infrastructure during productive operation – even during remote periods and after hours

Made in Germany

Outstanding quality and stable functions based on German production standards

- The development, production and functionality tests - all under one roof in Germany

Lifecycle

Hardware continuity for long-lasting project requirements

- Managed lifecycle of up to 12 months

Meets ENERGY STAR® requirements

Low power consumption and low costs, without any loss in performance

- 85% energy efficient power supply



Components

Processor	<p>Intel® Core™ i7-6700 processor (4 Cores / 8 Threads, 3.40 GHz, up to 4.0 GHz, 8 MB, Intel® HD Graphics 530) *. **</p> <p>Intel® Core™ i5-6600 processor (4 Cores / 4 Threads, 3.30 GHz, up to 3.9 GHz, 6 MB, Intel® HD Graphics 530) *. **</p> <p>Intel® Core™ i5-6500 processor (4 Cores / 4 Threads, 3.20 GHz, up to 3.6 GHz, 6 MB, Intel® HD Graphics 530) *. **</p> <p>Intel® Core™ i5-6400 processor (4 Cores / 4 Threads, 2.70 GHz, up to 3.3 GHz, 6 MB, Intel® HD Graphics 530) *. **</p> <p>Intel® Core™ i3-6100 processor (2 Cores / 4 Threads, 3.70 GHz, 3 MB, Intel® HD Graphics 530) **</p> <p>Intel® Pentium® processor G4500 (2 Cores / 2 Threads, 3.50 GHz, 3 MB, Intel® HD Graphics 530) **</p> <p>Intel® Pentium® processor G4400 (2 Cores / 2 Threads, 3.30 GHz, 3 MB, Intel® HD Graphics 510) **</p> <p>Intel® Celeron® processor G3900 (2 Cores / 2 Threads, 2.80 GHz, 2 MB, Intel® HD Graphics 510) **</p> <p>*with Intel® Turbo Boost Technology (clock speed and performance will vary depending on workload and other variables)</p> <p>**6th generation Intel® processor</p>
Operating systems	
Operating system	<p>Windows 10 Pro. Fujitsu recommends Windows 10 Pro.</p> <p>Windows 10 Home</p> <p>Windows 8.1 Pro</p> <p>Windows 8.1</p> <p>Windows 7 Professional 64-bit</p> <p>Windows 7 Professional 32-bit</p>
Operating system compatible	<p>Windows 10 Pro (license + recovery media only)</p> <p>openSUSE Linux</p>
Microsoft OS support information	<p>This system receives full support from Microsoft with Windows 10/Windows 10 Pro only. For any other Microsoft OS installed, this device has limited support from Microsoft. For more information, please see Microsoft's Support Lifecycle FAQ.</p>
Memory modules	<p>4 GB (1 module(s) 4 GB) DDR4, unbuffered, non-ECC, 2,133 MHz, UDIMM</p> <p>8 GB (1 module(s) 8 GB) DDR4, unbuffered, non-ECC, 2,133 MHz, UDIMM</p> <p>16 GB (1 module(s) 16 GB) DDR4, unbuffered, non-ECC, 2,133 MHz, UDIMM</p>
Hard disk drives (internal)	<p>SSD SATA III, 512 GB, 2.5-inch</p> <p>SSD SATA III, 256 GB, 2.5-inch</p> <p>SSD SATA III, 512 GB, 2.5-inch, SED</p> <p>SSD SATA III, 256 GB, 2.5-inch, SED</p> <p>SSD SATA III, 128 GB, 2.5-inch</p> <p>SSHD SATA III, 7,200 rpm, 1,000 GB, 3.5-inch</p> <p>SSHD SATA III, 5,400 rpm, 500 GB, 2.5-inch</p> <p>HDD SATA III, 7,200 rpm, 1,000 GB, 3.5-inch, business critical</p> <p>HDD SATA III, 7,200 rpm, 500 GB, 3.5-inch, business critical</p> <p>HDD SATA III, 7,200 rpm, 2,000 GB, 3.5-inch</p> <p>HDD SATA III, 7,200 rpm, 1,000 GB, 3.5-inch</p> <p>HDD SATA III, 7,200 rpm, 500 GB, 3.5-inch</p> <p>HDD SATA II, 5,400 rpm, 500 GB, 2.5-inch*</p>
Hard disk notes	<p>Up to 20 GB of HDD space is reserved for system recovery</p> <p>SSHD: (Solid State Hard Disk, Hybrid drive)</p> <p>SSD (Solid State Disk)</p> <p>SED (Self-Encrypting Drive)</p>

Graphics	VGA Extension Card NVIDIA® NVS™ 315, 1 GB NVIDIA® GeForce® GTX 745 2 GB FH, 2 GB NVIDIA® GeForce® 605 DisplayPort 1GB FH, 1 GB 1 FH59/ 2x DVI-I adapter cable 1 FH59/ 2x DP adapter cable DVI-I to VGA Adapter DP to DVI-D (single link) Adapter Cable AMD® Radeon R9 255 FH, 2 GB
Drives (optional)	BD Triple Writer SATA ultra slim (tray) DVD-ROM DVD Super Multi DVD Super Multi ultra slim (tray) MultiCard Reader 24in1 USB 2.0 3.5"
Interface add on cards/components (optional)	WLAN 802.11ac (2x2) PCIe x1 FH and BT 4.1 (dedicated regions only, up to BT 4.2 depending on OS version) WLAN 802.11ac (2x2) PCIe x1 FH (dedicated regions only) Gigabit Ethernet PCIe x1, DS eSATA Interface Dual serial card PCIe x1

Base unit

Base unit	ESPRIMO P556/E85+
Mainboard	
Mainboard type	D3400
Formfactor	µATX
Chipset	Intel® H110
Processor socket	LGA 1151
Processor quantity maximum	1
Supported capacity RAM (max.)	32 GB
Memory slots	2 DIMM (DDR4)
Memory frequency	2,133 MHz
Memory notes	Dual channel support For dual channel performance, 2 memory modules have to be ordered. Capacity per channel has to be the same.
LAN	10/100/1,000 MBit/s Realtek RTL 8111G
BIOS version	AMI Aptio V
BIOS features	BIOS Flash EPROM update by software Recovery BIOS Unified Extensible Firmware Interface (UEFI) CSM (Compatibility Support Module)
Audio type	On board
Audio codec	Realtek ALC671
Audio features	Internal speaker supports audio playback (optional), High Definition audio, 5.1 surround sound
I/O controller on board	
Serial ATA total	3
thereof SATA III	3
thereof eSATA	1

I/O controller on board

Controller functions	Serial ATA III (6 Gbit) NCQ AHCI
-----------------------------	--

Interfaces

Audio: line-in	1
Audio: line-in / microphone	1
Audio: line-out	1
Front audio: microphone	1
Front audio: headphone	1
USB 2.0 total	6
USB 3.0 total	4
USB front	2x USB 2.0 or/and 2x USB 3.0 (optional)
USB rear	2x USB 2.0; 2x USB 3.0
USB internal	2x USB 2.0
VGA	optional: via adapter card
DisplayPort	1
DVI	1 (DVI-D)
Mouse / Keyboard (PS/2)	2
Ethernet (RJ-45)	1
eSATA	1 (optional)
Interface Module notes	Anytime USB charge functionality

Input device / components

Input devices (optional)	Keyboard Mouse KBPC PX ECO Mouse M440 ECO
---------------------------------	--

Drive bays

Drive bays total	5
3.5-inch internal bays	2
3.5-inch external bays	1
5.25-inch external bays	2
Drive bay notes	3.5" bays can be used for 2.5" drives

Slots

PCI-Express 3.0 x16	1 x (210 mm / 8.27 inch) Full height
PCI-Express x1	2 x (190 mm / 7.48 inch) Full height

Graphics on board

Graphics brand name	Intel® HD Graphics 510, Intel® HD Graphics 530
Shared video memory	up to 1,782 MB
TFT resolution (VGA)	1,024 x 768 pixel 1,280 x 1,024 pixel 1,360 x 768 pixel 1,440 x 900 pixel 1,600 x 900 pixel 1,600 x 1,200 pixel 1,680 x 1,050 pixel 1,920 x 1,080 pixel
TFT resolution (DVI)	1,280 x 1,024 pixel 1,360 x 768 pixel 1,440 x 900 pixel 1,600 x 900 pixel 1,680 x 1,050 pixel 1,920 x 1,080 pixel 1,920 x 1,200 pixel

Graphics on board

TFT resolution (DisplayPort)	1,280 x 1,024 pixel 1,360 x 768 pixel 1,440 x 900 pixel 1,600 x 900 pixel 1,680 x 1,050 pixel 1,920 x 1,080 pixel 1,920 x 1,200 pixel 2,560 x 1,440 pixel 2,560 x 1,600 pixel 3,840 x 2,160 pixel 4,096 x 2,304 pixel
-------------------------------------	---

Graphics features

Dual display support
DirectX® 12
HDCP support
OpenCL™ 2.0 (requires Intel® Core™ i3, i5 or i7 processors)
OpenGL® 4.4
One DisplayPort connector can be converted to DVI-D or HDMI with an optional external adapter
For multi monitoring mode, graphics card and integrated graphics run in parallel
DisplayPort interface supports Ver. 1.2 incl. Multi-Stream
DVI-D interface supports audio output for HDMI monitors

Graphics notes

up to 1 GB dedicated video memory (main memory owned and locked for graphics use)
Tested resolutions, depending on display type additional resolutions and frequencies possible
Shared memory depending on main memory size and operating system
Resolution (color depth up to 32 Bit/pixel)
For TFT we recommend using 60Hz

Electrical values

Power efficiency note	power supply efficiency (at 230V; 20% / 50% / 100% load) : 83% / 86% / 85% 0-Watt mode with hard-off switch
Rated voltage range	100 V - 240 V
Rated frequency range	50 Hz - 60 Hz
Operating voltage range	90 V - 264 V
Operating line frequency range	47 Hz - 63 Hz
Max. output of single power supply	280 W
Power factor correction/active power	active
Monitor outlet	No

Power consumption

Power consumption note	See white paper Energy Consumption
Link to Energy White Paper	http://docs.ts.fujitsu.com/dl.aspx?id=8fbfcf07-7f86-4c5a-b4d5-22d71672893b

Heat dissipation

Heat dissipation notes	See white paper Energy Consumption
-------------------------------	------------------------------------

Noise emission

Related Processors for noise	Intel® Core™ i7 6700
Standard noise emission	2x4 GB, HDD, ODD, Windows According to ISO 7779:2010, ECMA-174
Standard noise notes / description	A-weighted sound power level LwAd (in B) / Workplace related A-weighted sound pressure level LpAm (in dB(A))
Standard noise operation mode: CPU 50% load	3.4 B / 21 dB(A) Bystander; 24 dB(A) Operator position
Standard noise operation mode: HDD load	3.5 B / 21 dB(A) Bystander; 24 dB(A) Operator position
Standard noise operation mode: Idle mode	3.4 B / 21 dB(A) Bystander; 24 dB(A) Operator position
Standard noise operation mode: ODD load	4.5 B / 31 dB(A) Bystander; 36 dB(A) Operator position
Standard noise operation mode: Office applications 2.0	3.4 B / 21 dB(A) Bystander; 24 dB(A) Operator position

Noise emission

Blue angel noise emission according certification	According to ISO 7779:2010, ECMA-74 for max. possible configuration
Blue angel noise notes / description	A-weighted sound power level L _{wad} (in B); 1B = 10dB
Blue angel noise operation mode: HDD load	3.7 B = 37 dB (A)
Blue angel noise operation mode: Idle mode	3.6 B = 36 dB (A)
Blue angel noise operation mode: ODD load	4.7 B = 47 dB (A)

Dimensions / Weight / Environmental

Dimensions (W x D x H)	175 x 425 x 353 mm 6.89 x 16.74 x 13.9 inch
Operating position	Vertical
Weight	9 kg
Weight (lbs)	20.22 lbs
Weight notes	Actual weight may vary depending on configuration
Operating ambient temperature	10 - 35 °C (50 - 95 °F)
Operating relative humidity	5 - 85 % (relative humidity)

Compliance

Product	ESPRIMO P556/E85+
Model	MI4W
Germany	TÜV GS
Europe	CE
USA/Canada	FCC (Class B) cCSAus
Global	RoHS (Restriction of hazardous substances) WEEE (Waste electrical and electronic equipment) Microsoft Operating Systems (HCL / HCL entry / WHQL) ENERGY STAR® 6.1 (dedicated regions) EPEAT® Gold (dedicated regions)
China	CCC China RoHS
Compliance link	http://globalsp.ts.fujitsu.com/sites/certificates

Additional Software

Additional software (preinstalled)	Adobe® Reader® (pdf reader) McAfee Multi Access Security (anti-virus and internet security software; 60 days trial version) Win7: Fujitsu Recovery (hard disk based recovery) Win8: Microsoft Push Button Recovery (hard disk based recovery) Microsoft Office (buy license to activate the pre-installed Microsoft Office)
Additional software (optional)	Recovery DVD for Windows® Drivers & Utilities DVD (DUDVD) CyberLink PowerDVD BD (playback software for Blu-ray Disc™) CyberLink PowerDVD DVD (playback software for DVD) Nero Essentials XL

Manageability

Manageability technology	DeskUpdate Driver management PXE 2.1 Boot code Wake up from S5 (off mode) WoL (Wake on LAN)
Manageability software	DeskView Client DeskView Instant BIOS Management
DeskView components	BIOS Management incl. Security Inventory Management Driver Management Alarm Management

Manageability**Supported standards**

DMI (Desktop Management Interface)
 SMBIOS (System Management BIOS)
 PXE (Preboot Execution Environment)
 WMI (Windows Management Instrumentation)
 WBEM (Web Based Enterprise Management)
 CIM (Common Information Model)

Security**Physical Security**

Kensington Lock support
 Eye for padlock

System and BIOS Security

Embedded security (TPM 2.0)
 EraseDisk (optional)
 Boot sector virus protection
 Write protect option for the Flash EPROM
 Control of all USB interfaces
 External USB ports can be disabled separately
 Control of external interfaces

User Security

User and supervisor BIOS password
 Hard disk password
 Access protection via external SmartCard reader (optional)
 Access protection via internal SmartCard reader (optional)
 Workplace Protect (secure authentication solution)

Workplace Embedded Tools

Auto BIOS Update via Fujitsu Server
 Auto BIOS Update via customer server (optional)
 Easy PC Protection (optional)

Miscellaneous

Keyboard on (Special Fujitsu keyboard required)
 Thermal management

Serviceability

EasyChange for single 3.5" HDD (optional)
 EasyChange for single optical drive (optional)
 Toolless serviceability for cabinet (optional)

Packaging information**Packaging dimension (mm)**

516 x 278 x 562 mm

Packaging dimension (inch)

20.31 x 10.94 x 22.13 inch

Max. quantity / pallet

24

Material - Weight (g) Carton

1280 g

Material - Weight (lbs) Carton

2.82 lbs

Material - Weight (g) EPS / PS

140 g

Material - Weight (lbs) EPS / PS

0.31 lbs

Material - Weight (g) PE

60 g

Material - Weight (lbs) PE

0.13 lbs

Packaging notes

printed user documentation is bleached in chlorine free process

Warranty**Warranty period**

1 year (for countries in EMEA)

Warranty type

Bring-In / Onsite Service (for countries within region EMEA, for all other countries depending on local regulations)

Warranty Terms & Conditions<http://support.ts.fujitsu.com/warranty>**Product Support Services - the perfect extension****Recommended Service**

9x5, Onsite Response Time: Next Business Day

Spare Parts availability

5 years after end of product life

Service Weblink<http://www.fujitsu.com/its/services/support>

Recommended Accessories

Display B24-8 TE Pro

The FUJITSU Display B24-8 TE Pro is made for intensive office work. With visual and mechanical ergonomics this marble-grey display enables fatigue-free working for hours in front of the screen. The large 60.5 cm (23.8-inch) screen allows you to keep always track of all open applications. This high-quality display works unfailingly around the clock. Easy connectivity, manageability and usability help you increase your productivity.

Order Code:
S26361-K1577-V140

Mouse M440 ECO

Fujitsu Mouse M440 ECO is made from 100% bio material and has a completely PVC free cable. The elegant M440 ECO works on nearly every surface and follows all your hand movements smoothly and precisely. It features two main buttons and as well as a scroll wheel providing comfortable computing to both right and left-handed users.

Order Code:
S26381-K450-L200

SOUNDSYSTEM DS E2000 Air

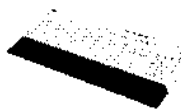
The new more powerful SOUNDSYSTEM DS E2000 Air gives you impressive, well-balanced sound throughout the frequency band. It is an unbeatable USB speaker set with a surprisingly small form factor. The robust satellite speakers are decorated with a deluxe piano finish and the base is adorned with warm ambient lighting.

Order Code:
S26391-F7128-I600

UC&C USB Headset Stereo H650e

The UC&C USB Headset Stereo H650e is the ultimate in style and functionality. Long, uncomfortable work calls are a thing of the past thanks to the cushioned ear pads and crystal clear sound. Adjustable headband and microphone provides the perfect fit for everyone. Optimized for Microsoft® Lync™ the headset displays a red 'in-call' LED to let your co-workers know when you're available, thus helping to boost office productivity.

Order Code:
S26391-F7139-L10

Keyboard KBPC PX ECO

Fujitsu's KBPC PX ECO keyboard is the perfect contribution to Green IT. The keyboard is made out of 45% renewable raw material and comes with a PVC free USB cable. In addition, the KBPC PX ECO offers first class comfort and ergonomics. It attracts attention with its impressive modern design and useful extras.

S26381-K341-L1** (**: country specific variation)

More information

Fujitsu OPTIMIZATION Services

In addition to FUJITSU Desktop ESPRIMO P556/E85+, Fujitsu provides a range of platform solutions. They combine reliable Fujitsu products with the best in services, know-how and worldwide partnerships.

Fujitsu Portfolio

Build on industry standards, Fujitsu offers a full portfolio of IT hardware and software products, services, solutions and cloud offering, ranging from clients to datacenter solutions and includes the broad stack of Business Solutions, as well as the full stack of Cloud offering. This allows customers to leverage from alternative sourcing and delivery models to increase their business agility and to improve their IT operation's reliability.

Computing Products

www.fujitsu.com/global/products/computing/

Software

www.fujitsu.com/software/

More information

Learn more about FUJITSU Desktop ESPRIMO P556/E85+, please contact your Fujitsu sales representative or Fujitsu Business partner, or visit our website.
www.fujitsu.com/fts/ESPRIMO

Fujitsu green policy innovation

Fujitsu Green Policy Innovation is our worldwide project for reducing burdens on the environment. Using our global know-how, we aim to contribute to the creation of a sustainable environment for future generations through IT. Please find further information at <http://www.fujitsu.com/global/about/environment>



Copyrights

All rights reserved, including intellectual property rights. Changes to technical data reserved. Delivery subject to availability. Any liability that the data and illustrations are complete, actual or correct is excluded. Designations may be trademarks and/or copyrights of the respective manufacturer, the use of which by third parties for their own purposes may infringe the rights of such owner.

For further information see www.fujitsu.com/terms

© 2016 Fujitsu Technology Solutions GmbH

Disclaimer

Technical data is subject to modification and delivery subject to availability. Any liability that the data and illustrations are complete, actual or correct is excluded. Designations may be trademarks and/or copyrights of the respective manufacturer, the use of which by third parties for their own purposes may infringe the rights of such owner.

